

Multifunctional FHD Video Recorder

READ THIS INSTRUCTIONS CAREFULLY BEFORE USE AND STORE IN A SAFE PLACE FOR FUTURE REFERENCE

Version:3.1














Customer Service:
Email:support@digitnow.us
Tel.:+1 6264203418(US)
Mon.-Fri. 9:00-17:00(PST)

148 s 8th ave city of industry CA91746
MADE IN CHINA



V102-A

Quick start guide

1. Insert SD card or U disk (format of FAT32 , maximum capacity of 128G) and connect the device to the "DC/ Type-C" power port via USB cable, and insert HDMI signal source into HDMI IN port or insert CVBS signal source into AV IN port, and then long press the " " power button for 3 seconds to turn on the power and enter the recording mode. (See page 5-7 of the User Manual for details.)
2. After turning on the power to enter the recording mode, short press the " " PREV button to quickly switch HDMI input and CVBS input. Select the corresponding input and then short press the " " recording button to start recording. To stop recording, short press the " " recording button again.(See page 10-11 of the User Manual for details.)
3. To play recorded video, short press the " " MODE button to switch to the play mode, then short press the "OK" button to start playing video, and short press "OK" button to suspend play again. If there are multiple videos recorded, short press the " " PREV button to switch to last video, short press the " " NEXT button to switch to the next video. If want go back to the recording mode, short press the " " MODE button again.(See page 12-13 of the User Manual for details.)
4. To adjust the volume, short press the " " Button to increase the volume and short press the " " Button to decrease the volume.
5. To output images to a large-screen display, just plug the HDMI cable into the HDMI OUT port or use the CVBS cable to plug in the AV OUT port.(See page 14 of the User Manual for details.)
6. If want to view recorded videos on the computer, can connect the product to the computer via a USB cable. After starting up, just press the " " menu button to enter the setting, and select the USB mode as" MSDC ", and then press the "OK" button to confirm to connect to the computer. (See page 15 of the User Manual for details.)

Thanks for purchasing Multifunctional FHD Video Recorder. With a large 5-inch OLED screen, user-friendly operation interface and rich video interfaces, the Multifunctional FHD Video Recorder can record and play 1080P HD videos directly from AV ports or HDMI ports (such as set-top boxes, computers, game consoles, etc.) without computer operation.

The following guides you how to set up. Hope this device will bring you nice digital experience.

Safety Information

1. Carefully read and follow the manufacturer's instructions in this manual and save the manual for future reference.
2. Clean with a dry cloth only.
3. Do not use the product close to any heat source.
4. Unplug the product from the wall socket during lightning storms or when it is not being used.
5. Do not expose the product to moisture, as this poses a risk of fire or electrical shock.
6. If the product is damaged, please refer all repairs to qualified personnel.

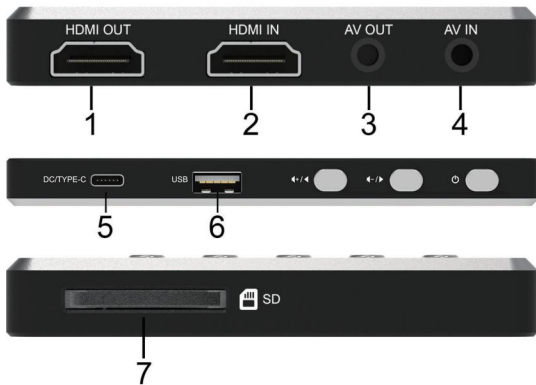
N.B.! Do not connect the audio output from a high-power amplifier to the product's audio input.

N.B.! Charge before first use. When the battery is completely depleted, it will need approximately 3 hours for a full charge.

Features

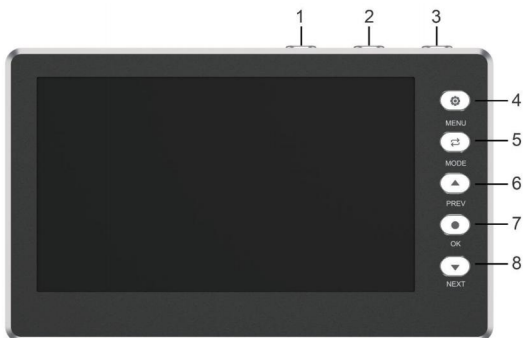
1. A large 5-inch OLED screen.
2. Full stereo speakers.
3. Built-in large capacity battery
4. Support the input and output of 1080P HD video signal .
5. Support the input and output of AV and HDMI HD video signal.
6. Support recording and playback of 1080P hd video signals
7. Support for the plug-in USB/SD ports
8. Type-c 5V± 5% power data interface is supported

Interface function:



1. HDMI OUT—HDMI video output port
2. HDMI IN—HDMI video input port
3. AV OUT—3.5 mm video output port
4. AV IN—3.5 mm video input port
5. DC/TYPE-C—power and data ports
6. USB—USB port
7. SD—SD card port

Button function

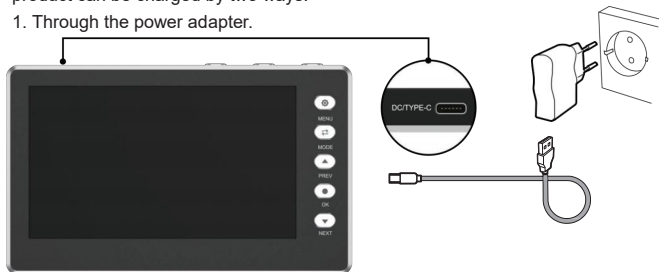


1. Volume up button -- short press to increase the volume, the setting status of the menu to short press is the left button function.
2. Volume down button—short press to reduce the volume, the setting status of the menu to short press is the right button function.
3. Power button—long press for 3 seconds to turn on/off the power.
4. Menu button—Short press to open/close menu settings.
5. MODE button—Short press to switch between recording mode and playback mode.
6. PREV button-- press short to switch to input signal source in the recording mode, short press to switch to the prev one in other states.
7. OK button—short press to record video in the recording mode, short press to confirm in other states.
8. Next button—press short to close the status bar in the recording mode, short press to switch to the next one in other states.

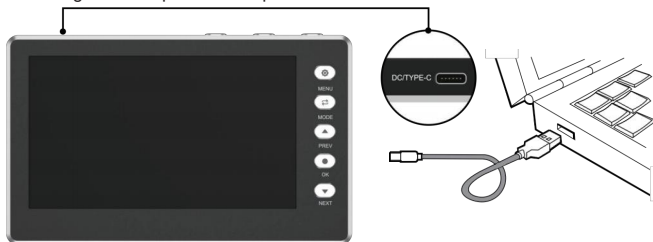
Charge the product

Before the first use, the product should be fully charged. The internal battery of the product can be charged by two ways:

1. Through the power adapter.



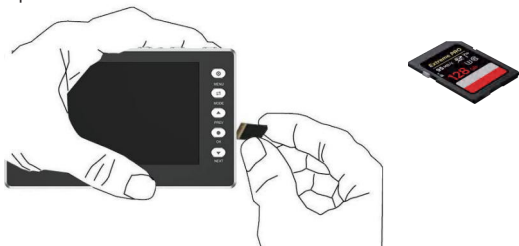
2. Through the computer's USB port.



When the battery is completely depleted, it will need approximately 3 hours for a full charge.

Install the storage device

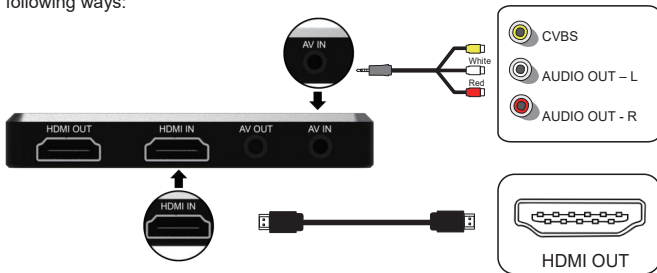
The storage device can use USB flash disk or SD card (format of FAT32 , maximum capacity of 128G). For best results, it is recommended to use an SD card with a speed level of 10 or above.



In order to remove the SD memory card, gently press inward and then carefully remove the card.

Connecting a Video Source:

Connect your Multifunctional FHD Video Recorder to the video source in one of the following ways:

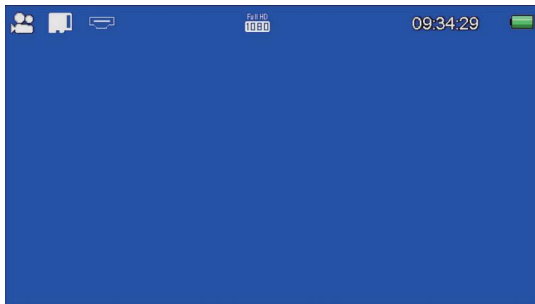


Start the Multifunctional FHD Video Recorder

1. Make sure it is connected to the power supply or the battery is fully charged and the memory card is in place. Long press the "⏻" power button for 3 seconds to turn on the power supply, and long press the "⏻" Power button for 3 seconds can turn off the power supply.



2. Turn on the power and enter the recording mode, and the following information will be displayed on the screen:



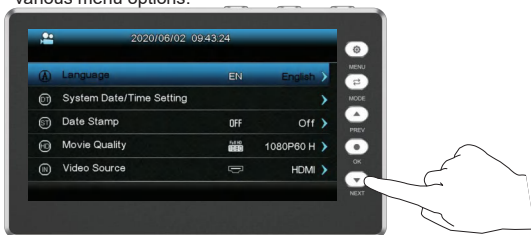
N.B.! If no memory card is in place, the message **No Card** appears on the display.

Settings in the Video Recording Mode

Short press the "ⓘ" menu button to access the settings.



Short press the "▲" PREV button and the "▼" NEXT button can scroll between the various menu options.



Short press the "OK" button to confirm the selection. Short press the "ⓘ" menu button to exit the Settings.



Set the time and date

Short press the "⚙️" menu button to open the settings



short press the "▼" NEXT button to the option to scroll the time and date, short press the "OK" button to confirm the setting, short press the "◀" left button to increase the value, short press the "▶" Left button to reduce the value, short press the "▼" NEXT button to scroll to the next selection, after correct adjustment, short press the "OK" button to confirm saving the setting.



Other settings

The other settings in the video menu are the same as the time and date.

The available settings:

Language: 8 languages available.

Time and Date: date input (refer to the previous page) .

Date stamp: time and date watermarks can be displayed on recorded videos.

The video quality: the video quality optional

Video source: can choose HDMI input or AV input.

TV Out: can choose NTSC or PAL Standard TV format output.

Automatically stop recording: can set the automatic stop recording time.

USB mode: can choose to charge or connect to the computer.

Default storage device: when using usb flash disk and SD card at the same time, can choose to use USB flash disk or SD card as the default storage device.

Timing recording: can set the time and date of timing recording.

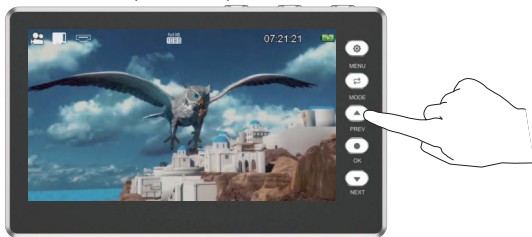
Restore factory settings: You can restore the settings to the factory default state.

Formatting: can format the storage devices.

Firmware version: can display firmware version.

Recording

- Connect your Multifunctional FHD Video Recorder to the video source.
- Turn on your Multifunctional FHD Video Recorder
- According to the inputted video source, press the "▲" PREV button to switch to select HDMI input or AV input.



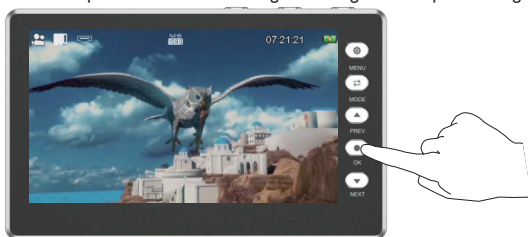
- When the video picture appears, press the "●" recording button to start recording.



- The counter in the top right-hand corner of the screen turns red.
- Short press the "▼" NEXT button to close the status bar and display the full screen, and short press the "▼" NEXT button again can restore the display of status bar.

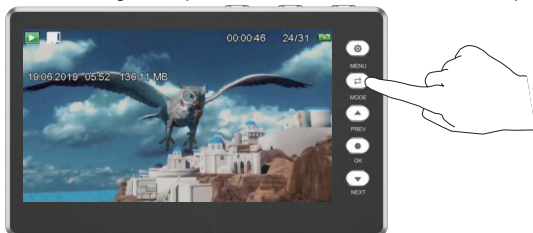


- Short press the "●" recording button again to stop recording.



Play recorded video

1. In recording mode, press the "↺" MODE button to switch to play mode.



2. Press the "OK" button to start to play the video, and then press the "OK" button to pause the video.



3. If you have recorded multiple videos, you can switch to the previous video by pressing the "▲" PREV button and to switch to the next video by pressing the "▼" NEXT button.



4. Long press the "▲" PREV button can fast backward the video, long press the "▼" NEXT button can fast forward the video, and short press "OK" can restore the normal speed to play the video.



5. Short press the "⚙️" menu button to stop the play.



6. Press the "↺️" MODE button again to return to the recording mode.

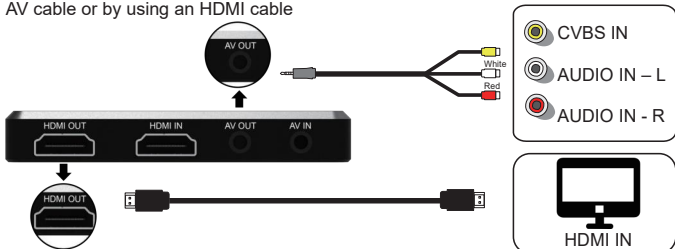
The following settings can be made in play mode

Protect prevents the films from being deleted. You can select single films, all of them or select from the miniatures that are displayed. Protected files are indicated with a padlock.

Delete recorded videos, you can choose to delete one or all of them.

Showing Recordings on TV

You can connect your Multifunctional FHD Video Recorder to a TV receiver via the AV cable or by using an HDMI cable



If you want to connect to the HDMI on your TV, use the accompanying HDMI cable.

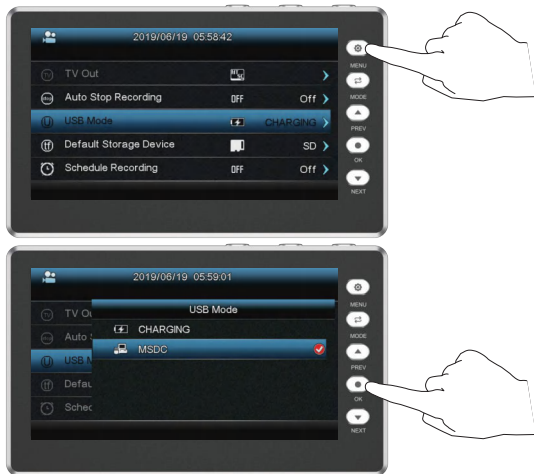
Multifunctional FHD Video Recorder now turns black and you will see the film on the TV screen instead.

Connect to the computer

By connecting your Multifunctional FHD Video Recorder to a computer, you can process your recorded films and images on the computer itself. A drive routine will automatically be installed onto your computer the first time you connect the device to your computer. Your Multifunctional FHD Video Recorder then appears as a removable disc drive on the computer, so you can copy and rename, or delete your films.

How to copy your recordings onto your computer

1. Start the Multifunctional FHD Video Recorder, then press the "⚙️" menu button to enter the settings, select the USB mode as "MSDC", and then press the "OK" button to confirm the connection to the computer.



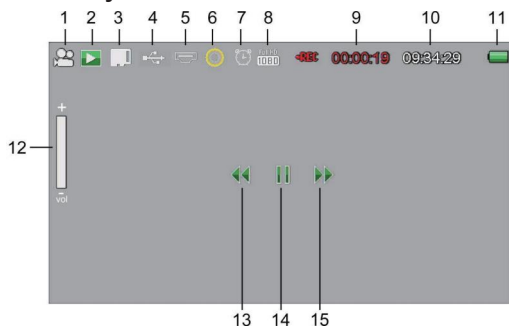
2. Connect your Multifunctional FHD Video Recorder to the computer by using the USB cable.
3. Your Multifunctional FHD Video Recorder now appears as a removable disc drive on the computer.

N.B.! Connecting to the computer only supports reading SD card, please insert the U disk directly into the computer.

Troubleshooting

1. Before pressing the REC button of the product, please make sure the input sources (such as set-top boxes, set-top boxes, computers, game consoles, etc) is turned on and can provide audio or video signal to the product.
2. Make sure that the cables are securely connected to both the input sources and the device.
3. If the product crashes, please use a needle to push the mini hole at the back of the product to reset the product.
4. Please use a SD card whose transfer speed is Class 10 or above.
5. If the Video Grabber's software seizes up, the system can be reset by inserting a pin or similar object into the small hole found on the back of the device.
6. If the screen remains black in spite you having pressed the On/Off Menu button for a protracted period, the battery may be dead.
Connect the charger and try again.
7. If you do not succeed in recording video material to your Multifunctional FHD Video Recorder, the cables may be incorrectly connected or be connect too loosely.

Screen Symbols



- | | |
|---------------------------|-----------------------------------|
| 1. Recording mode symbol | 9. Recording time symbol |
| 2. Play mode symbol | 10. Maximum recording time symbol |
| 3. SD card storage symbol | 11. Battery capacity symbol |
| 4. USB storage symbol | 12. Volume mark symbol |
| 5. HDMI input symbol | 13. Fast backward symbol |
| 6. AVinput symbol | 14. Pause symbol |
| 7. Timed record symbol | 15. Fast forward symbol |
| 8. Video quality symbol | |

Technical Specifications

Connections

Interface	USB 2.0
Video Input	HDMI,AV
Audio Input	HDMI,AV
Video Output	HDMI, AV, 5" OLED
Audio Output	HDMI, AV, Speaker

Hardware Information

Dimensions	142.5*86.8*17mm
Weight	195g

Package Contents

Device	Multifunctional FHD Video Recorder
Others	HDMI cable, TYPE-C USB Cable,AV cable, User Manual

Specifications

System Requirement	No Computer Required To Record/Playback To Transfer Videos To Computer: PC (Windows) or Mac Required
Resolution	Input / Pass-through: 720 x 480 (60p), 720 x 576 (50p), 1280 x 720p(60p),1920 x 1080 (50i), 1920 x 1080 (60i), 1920 x 1080 (50p), 1920 x1080 (60p)
Maximum storage capacity	128G
Record Quality	1080P, 60 FPS
Record Format	MOV
Max File	4 GB
Battery	1800mAh (lasts approximately 1 hour recording; 2 hours playing back)
DC/USB Power Input	5V



At the end of its life, the device has to be separated from the other waste. Consign the device and all its components together to a center of electronical and electrotechnical waste recycling center, designated by your local authorities

Customer Service:

Email: support@digitnow.us

Tel.: +1 6264203418(US)

Mon.-Fri. 9:00-17:00(PST)

148 s 8th ave city of industry CA91746

MADE IN CHINA

